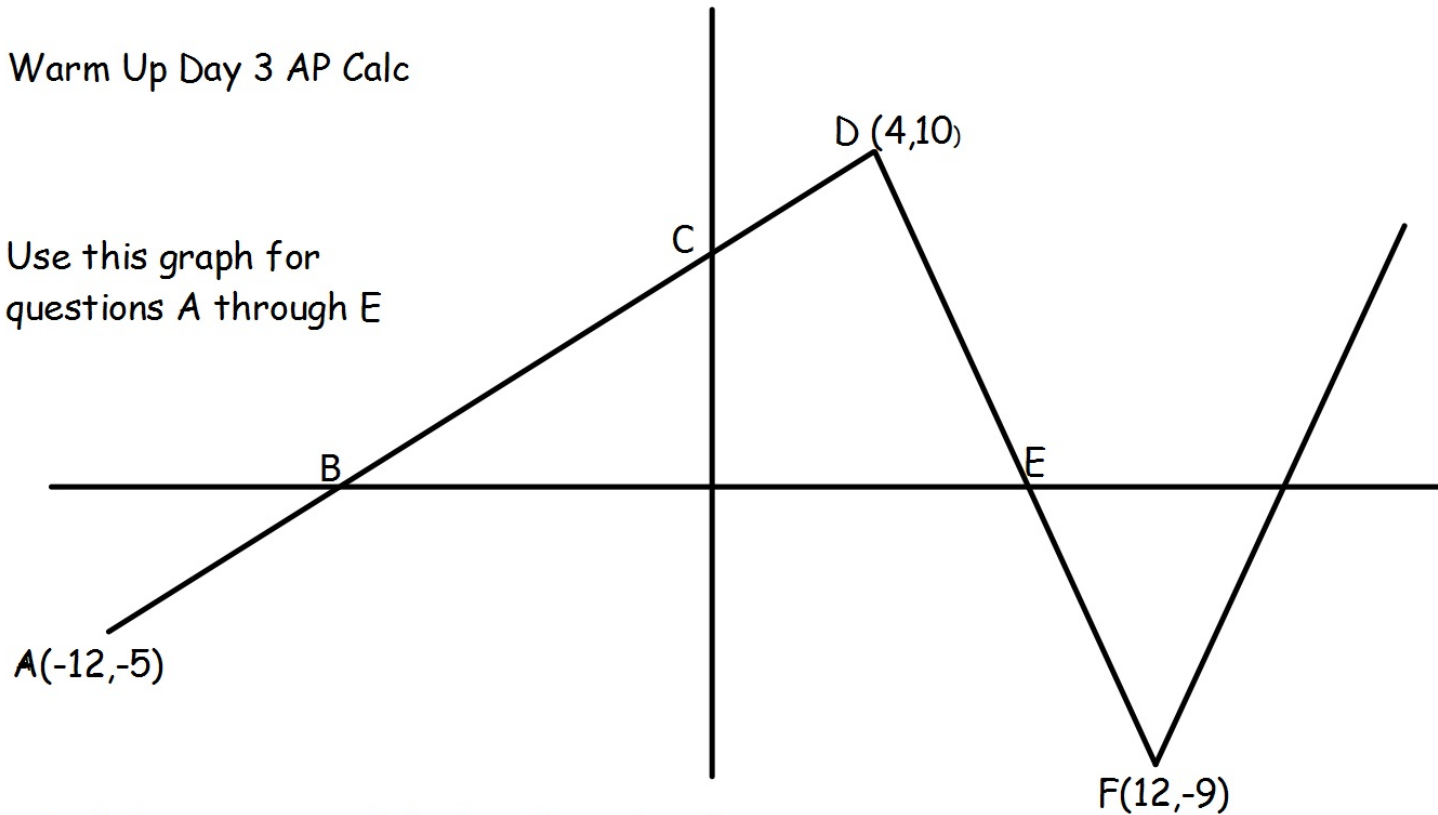


Warm Up Day 3 AP Calc

Use this graph for questions A through E



- A. Find the equation of the line from A to D.
- B. Find the equation of the line from D to F.
- C. Using your answer in A, find the coordinates of points B and C.
- D. Using your answer in B, find the coordinates of point E.
- E. When is the graph negative? That is, when is  $f(x) < 0$ ?