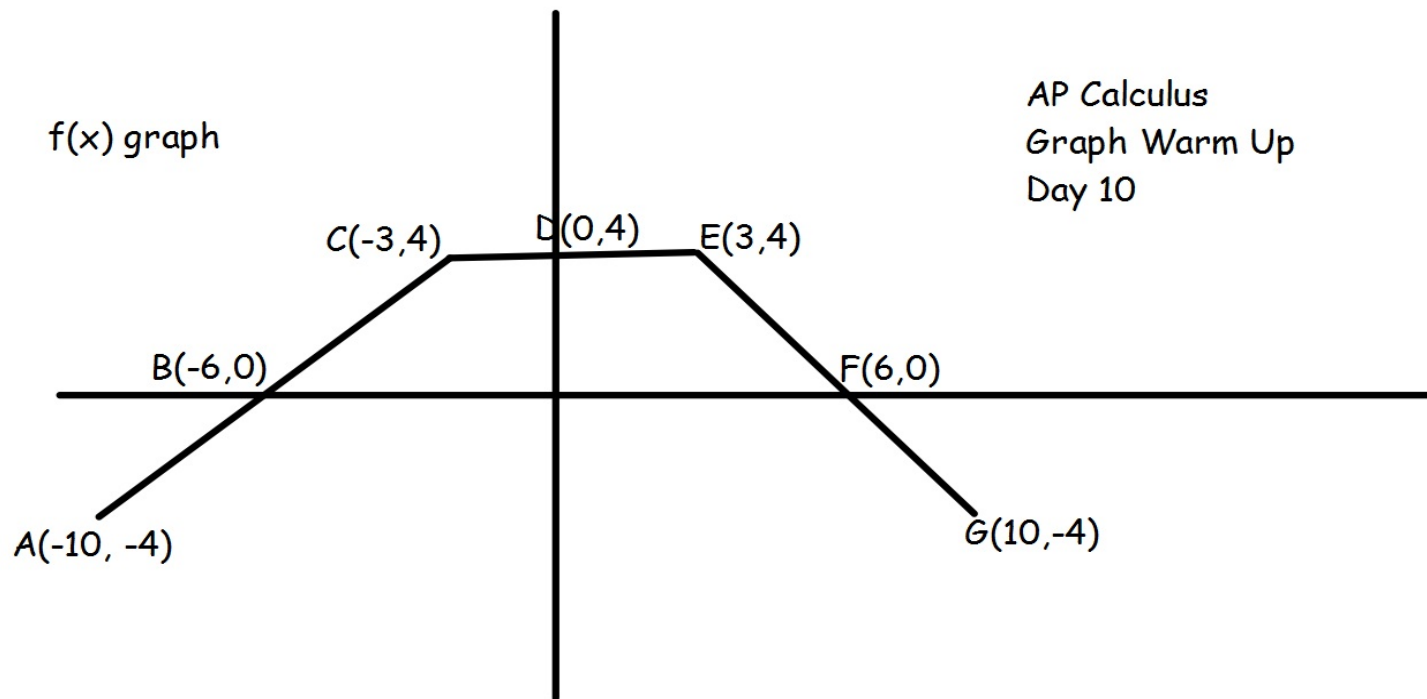


f(x) graph

AP Calculus
Graph Warm Up
Day 10



1. When is the function increasing (going up)? decreasing (going down)?
2. What are the zeros of the function?
3. What is the slope of the function from A to C? from C to E?
4. What would the equation of the line be for the function from E to G?
5. When is the function negative? That is when is $f(x) < 0$?
6. When is the function positive? That is, when is $f(x) > 0$?
7. Let $g(x) = f(x + 4) - 2$. What would $g(9)$ be? $g(0)$? $g(-6)$?