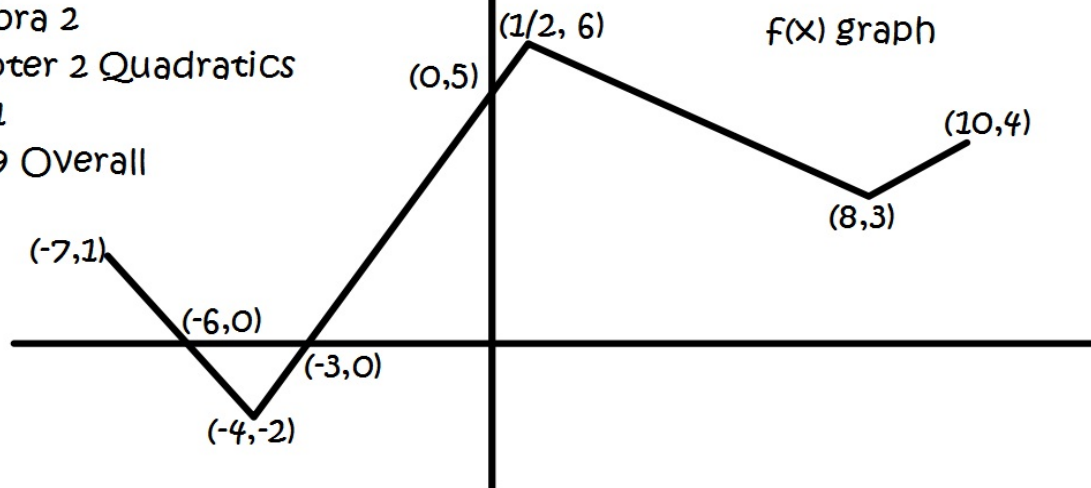


Warm Up  
Algebra 2  
Chapter 2 Quadratics  
Day 1  
Day 9 Overall



1. What is the value of  $f(0) + f(\frac{1}{2}) + f(8) - f(4)$ ? \_\_\_\_\_
2. If you added the 2 zeros of the graph together, what would you get? \_\_\_\_\_
3. What is the maximum  $y$  value of this function? Circle -7 5 6 10
4.  $y = 3$  is the equation of a horizontal line. If you drew  $y = 3$  across this graph above, how many times would the function touch that line?
5. Solve the equation  $x + f(-4) = 19 + f(10)$
6. Bonus: If you were to shift the whole graph up 2 units, how many times would it now touch the  $x$ -axis?