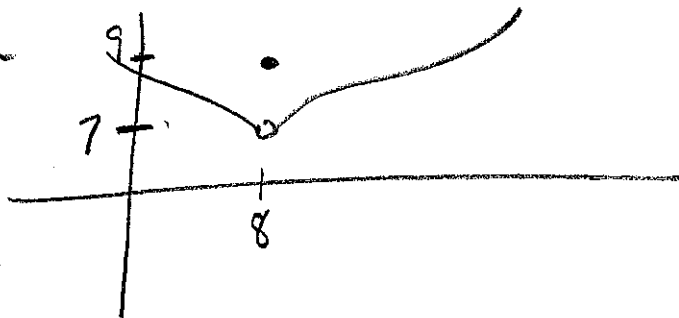


10/22/14

Pop quiz

1. $\frac{d}{dx} [x \sin x] =$

2. True or False



$\lim_{x \rightarrow 8} f(x) = 9$

3. $\frac{d}{dx} [(x^4 - \cos x)^5] =$

4. $f(x) = \begin{cases} \frac{(2x+1)(x-2)^2}{x-2} & ; x \neq 2 \\ k & ; x = 2 \end{cases}$

For what value of k is $f(x)$ continuous at $x=2$?

5. $\frac{d}{dx} \left[\cos \left(e^{\frac{4}{x}} \right) \right]$